

# CX

SERIES

MINI-EXCAVATORS

CX20B<sup>ZTS</sup> CX22B<sup>ZTS</sup> CX27B<sup>ZTS</sup>

**CASE**



P R O F E S S I O N A L P A R T N E R

# CX20B<sup>ZTS</sup> CX22B<sup>ZTS</sup>



## HYDRAULICS

Completely redesigned component layout: hydraulic components are now grouped on the right side of the machine. A wide, hinged panel provides **easy access to all hydraulic components**. The lower deck can be easily and independently unbolted.



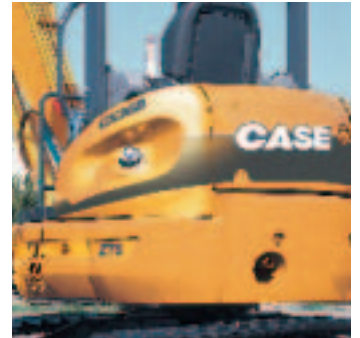
## ENGINE

The **new engines** are still located at the rear but the **access to main components** such as **air filter, engine oil filters** and the **water separator**, is now **highly improved** thanks to the **new layout** and to a **wide, hinged panel**.



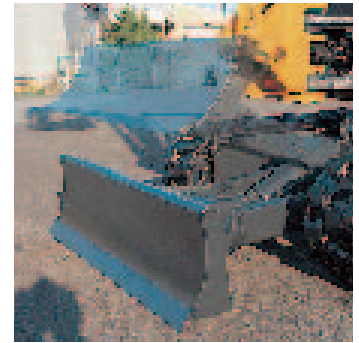
## ZERO TAIL SWING

A **smart, compact design** allows these machines to **rotate completely within the width of their tracks**. With the advantage of zero tail swing, operators enjoy the confidence that **the excavator won't strike work-site objects or suffer damage**. In this case, zero means a lot.



## FUEL TANK

The **Polyethylene, rust free, fuel tank** is now located on the left-rear side of the machine and **can be easily refilled from ground level** simply by **unscrewing the fuel cap**.



## BLADE

The front blade, newly designed, features a **sophisticated roll away shape**.

In backfilling operations, the earth rolls away in front of the blade.

In addition, it ensures unrivalled strokes:

¥ for **quicker backfilling operations**;

¥ for **excellent gradeability**

with the blade raised, to overcome obstacles, such as heaps of earth, on the job site.



## CAB / CANOPY ERGONOMY

Wider entrance and operator compartment.

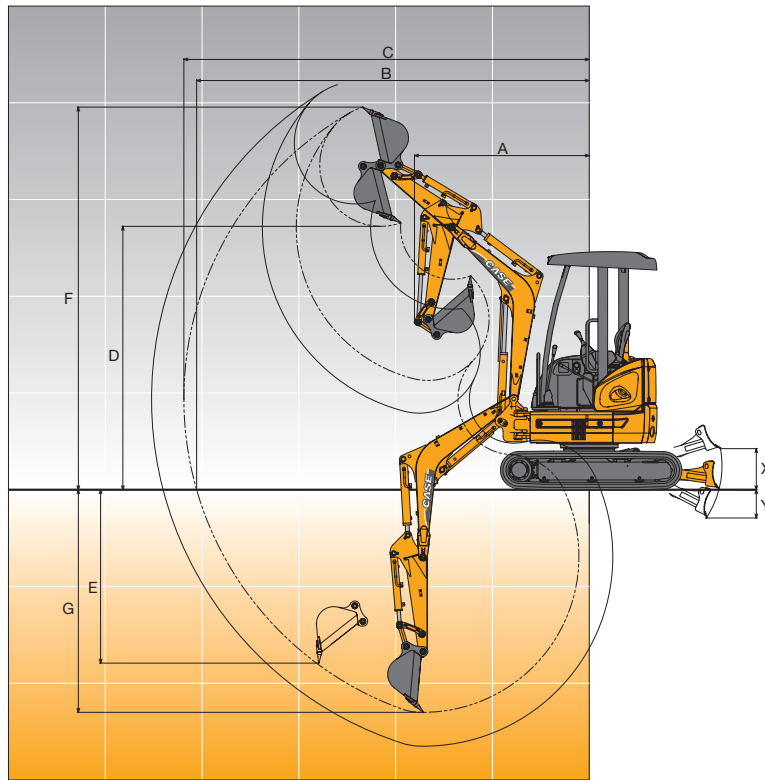
**Enhanced visibility in all directions**, both in cab and canopy versions. **Ergonomically located, pilot-operated joystick controls**, combined with the well located pedals and switches, provide **maximum operator comfort**.



## TRACKS

The machine can be supplied with **rubber or steel tracks** which are **completely interchangeable**. This gives the customer free choice according to the job site where the machine is expected to operate.

# WORKING RANGE



## CX20B<sup>ZTS</sup> canopy

## CX22B<sup>ZTS</sup> cab

## CX27B<sup>ZTS</sup> canopy

## CX27B<sup>ZTS</sup> cab

	mm	CX20B <sup>ZTS</sup> canopy		CX22B <sup>ZTS</sup> cab		CX27B <sup>ZTS</sup> canopy		CX27B <sup>ZTS</sup> cab	
		STD. DIPPER 0.98 m	LONG DIPPER 1.33 m	STD. DIPPER 0.98 m	LONG DIPPER 1.33 m	STD. DIPPER 1.12 m	LONG DIPPER 1.37 m	STD. DIPPER 1.12 m	LONG DIPPER 1.37 m
<b>A</b> Min. swing radius	mm	1800	1900	2030	2070	1830	1880	2060	2080
<b>B</b> Max. digging reach at ground level	mm	4060	4400	4060	4400	4510	4770	4510	4770
<b>C</b> Max. digging reach	mm	4190	4520	4190	4520	4640	4890	4640	4890
<b>D</b> Max. dumping height	mm	2720	2950	2470	2650	3170	3380	2970	3170
<b>E</b> Max. vertical digging depth	mm	1790	2130	1790	2130	2320	2560	2320	2560
<b>F</b> Max. digging height	mm	3960	4190	3660	3850	4470	4690	4260	4470
<b>G</b> Max. digging depth	mm	2300	2650	2300	2650	2540	2790	2540	2790
<b>X</b> Dozer strokes (above)	mm	425	425	425	425	445	445	445	445
<b>Y</b> Dozer strokes (below)	mm	290	290	290	290	335	335	335	335
<b>Bucket breakout force</b>	kN	20		20		22		22	
<b>Dipperstick breakout force</b>	kN	14		14		15		15	
<b>Bucket range</b>	m <sup>3</sup>	0.035 - 0.088		0.035 - 0.088		0.035 - 0.088		0.035 - 0.088	

## ENGINE

<b>Model</b>	YANMAR 3TNV82A-SYB
<b>Type</b>	Water-cooled, 4 cycle, direct injection, diesel engine*
<b>Cylinders</b>	3
<b>Bore and stroke</b>	82 mm x 84 mm
<b>Displacement</b>	1330 cm <sup>3</sup>
<b>Net output power (ISO 14396)</b>	17 kW/23 hp @ 2200 rpm
<b>Net maximum torque</b>	80.1 Nm @ 1320 rpm
<b>Starting motor</b>	1.7 kW
<b>Alternator</b>	40 A / 12 V
<b>Batteries</b>	1 x 64 Ah

\* Tier 2 emissioned engine complies with 97/68/CE STAGE 2 rules

## PERFORMANCE

<b>Travel speed</b> (rubber/steel tracks)	<b>low</b>	2.3 km/h
	<b>high</b>	4.1 km/h
<b>Gradeability</b>	58% - 30 <sub>i</sub>	
(Gradeability is limited by engine lubrication requirements)		

## CAPACITIES

<b>Fuel</b>	28.0 litres
<b>Coolant</b>	3.8 litres
<b>Engine oil</b>	5.5 litres
<b>Hydraulic system</b>	25.0 litres

# CX27B<sup>ZTS</sup>

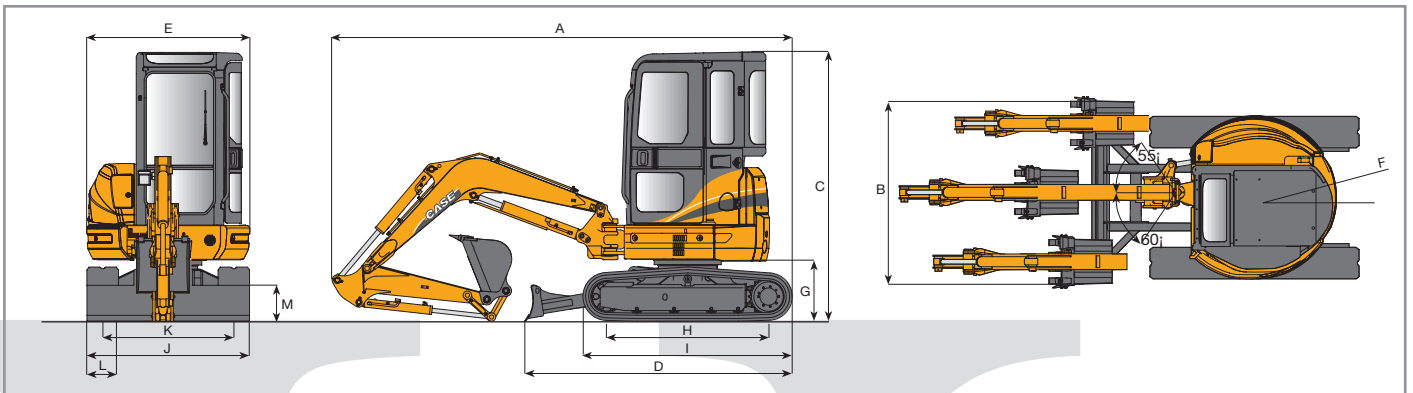
## HYDRAULIC SYSTEM

Hydraulic pumps	2 variable displacement axial piston pumps + 1 gear pump
Total delivery	2 x 26 l/min + 14 l/min
Max. operating pressure	230 bar
Hydraulic motor with reduction gear	2-axial piston, 2-speed motor
Cylinders (boom, dipper, boom swing, bucket, dozer)	Double action cylinders

## SWING

Hydraulic motor	Axial piston type	
Swing speed	8.7 rpm	
Swing brake	Automatic	
Boom swing type	Hydraulic cylinder	
Boom swing angle	right	55 <sub>i</sub>
	left	60 <sub>i</sub>
Tail swing radius (F)	700 / 740 - 750 mm	

## GENERAL DIMENSIONS



		CX20B <sup>ZTS</sup> canopy CX22B <sup>ZTS</sup> cab	CX27B <sup>ZTS</sup> canopy CX27B <sup>ZTS</sup> cab
A Overall length	mm	3820	4130
B Overall width	mm	1400	1500
C Overall height	mm	2460	2500
D Basic machine length	mm	2260	2410
E Width of upperstructure	mm	1400	1400
F Tail swing radius	mm	700 / 740	750
G Ground clearance of rear end	mm	480	520
H Length of tracks on ground	mm	1490	1590
I Overall length of crawler	mm	1870	1980
J Overall width of crawler	mm	1400	1500
K Track gauge	mm	1150	1250
L Crawler shoe width (rubber/steel)	mm	250	250
M Blade height	mm	300	300
Ground clearance of undercarriage	mm	250	250

## WEIGHTS AND GROUND PRESSURE

		CX20B <sup>ZTS</sup> canopy CX22B <sup>ZTS</sup> cab		CX27B <sup>ZTS</sup> canopy CX27B <sup>ZTS</sup> cab	
		●	●	●	●
<b>OPERATING WEIGHT</b>					
Rubber tracks	kg	2100	2420	2490	2630
Steel tracks	kg	2230	2550	2620	2760
<b>GROUND PRESSURE</b>					
Rubber tracks	bar	0.26	0.27	0.28	0.30
Steel tracks	bar	0.27	0.29	0.30	0.31
Additional bolted counterweight is available when High stability performance is required:					
Weight	kg	+172		+172	
Tail swing radius	mm	+74		+74	



# LIFTING CAPACITY

Value are expressed in tonnes

## CX20B<sup>ZTS</sup> canopy

Height (m)	DIPPER 1330 mm																
	Reach																
	1.0 m		1.5 m		2.0 m		2.5 m		3.0 m		3.5 m		4.0 m		Max reach		
	Front	Side	Front	Side	Front	Side	Front	Side	Front	Side	Front	Side	Front	Side	Front	Side	Reach m
4.0																	
3.5									0.41	0.37							
3.0									0.39	0.34							
2.5																	
2.0									0.40	0.34	0.38	0.26					
1.5								0.51	0.45	0.46	0.33	0.37	0.25				
1.0					0.90	0.60	0.63	0.43	0.47	0.32	0.37	0.25			0.31	0.20	3.80
0.5					0.86	0.57	0.61	0.41	0.46	0.31	0.36	0.24					
0			0.86	0.86	0.84	0.55	0.59	0.39	0.45	0.30	0.36	0.24					
-0.5	0.94	0.94	1.28	0.89	0.84	0.55	0.59	0.39	0.45	0.30	0.36	0.24					
-1.0	1.36	1.36	1.44	0.90	0.85	0.55	0.59	0.39	0.45	0.30							
-1.5	1.90	1.90	1.34	0.92	0.86	0.57	0.60	0.40									
-2.0			0.59	0.59	0.43	0.43											

## CX22B<sup>ZTS</sup> cab

Height (m)	DIPPER 1330 mm																
	Reach																
	1.0 m		1.5 m		2.0 m		2.5 m		3.0 m		3.5 m		4.0 m		Max reach		
	Front	Side	Front	Side	Front	Side	Front	Side	Front	Side	Front	Side	Front	Side	Front	Side	Reach m
4.0																	
3.5																	
3.0									0.57	0.52							
2.5											0.54	0.40					
2.0									0.59	0.53	0.55	0.40					
1.5									0.92	0.71	0.70	0.52	0.54	0.39	0.44	0.32	
1.0					0.97	0.67	0.70	0.52	0.54	0.38	0.43	0.31			0.42	0.30	3.80
0.5					0.94	0.65	0.68	0.48	0.53	0.38	0.43	0.31					
0					0.94	0.64	0.67	0.48	0.52	0.37							
-0.5	1.34	1.34	1.54	1.00	0.94	0.65	0.67	0.47	0.52	0.37							
-1.0	1.97	1.97	1.50	1.02	0.95	0.66	0.68	0.48									
-1.5			0.95	0.95	0.67	0.67											
-2.0																	

## CX27B<sup>ZTS</sup> cab

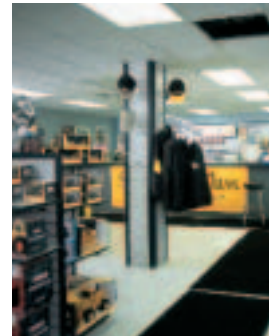
Height (m)	DIPPER 1120 mm																
	Reach																
	1.0 m		1.5 m		2.0 m		2.5 m		3.0 m		3.5 m		4.0 m		Max reach		
	Front	Side	Front	Side	Front	Side	Front	Side	Front	Side	Front	Side	Front	Side	Front	Side	Reach m
4.0																	
3.5							0.53	0.53									
3.0									0.47	0.47							
2.5									0.47	0.47	0.48	0.36					
2.0							0.59	0.59	0.52	0.47	0.49	0.36					
1.5					1.05	0.85	0.74	0.60	0.60	0.45	0.50	0.35					
1.0							0.82	0.57	0.62	0.44	0.49	0.35			0.40	0.28	4.00
0.5					0.98	0.77	0.80	0.56	0.61	0.43	0.49	0.34					
0					1.14	0.77	0.79	0.55	0.60	0.42	0.48	0.33					
-0.5	1.08	1.08	1.28	1.28	1.14	0.77	0.79	0.55	0.60	0.42	0.48	0.33					
-1.0	1.62	1.62	1.67	1.30	1.15	0.88	0.80	0.55	0.61	0.42							
-1.5			1.27	1.27	0.91	0.80	0.67	0.56									
-2.0					0.53	0.53											

Height (m)	DIPPER 1370 mm																		
	Reach																		
	1.0 m		1.5 m		2.0 m		2.5 m		3.0 m		3.5 m		4.0 m		Max reach				
	Front	Side	Front	Side	Front	Side	Front	Side	Front	Side	Front	Side	Front	Side	Front	Side	Reach m		
4.0								0.47	0.47										
3.5																			
3.0																			
2.5																			
2.0											0.46	0.46	0.44	0.36	0.40	0.28			
1.5							0.86	0.86	0.64	0.61	0.54	0.45	0.48	0.35	0.40	0.28			
1.0							1.18	0.81	0.80	0.58	0.62	0.44	0.49	0.34	0.40	0.27	0.36	0.25	4.20
0.5							1.14	0.77	0.80	0.55	0.61	0.42	0.48	0.33	0.39	0.27			
0					0.64	0.64	1.13	0.76	0.79	0.54	0.60	0.41	0.48	0.33	0.39	0.27			
-0.5	0.86	0.86	1.08	1.08	1.13	0.76	0.78	0.54	0.59	0.41	0.47	0.33							
-1.0	1.28	1.28	1.62	1.27	1.14	0.76	0.79	0.54	0.59	0.41	0.48	0.33							
-1.5	1.81	1.81	1.56	1.29	1.06	0.78	0.78	0.55	0.56	0.42									
-2.0			0.99	0.99	0.70	0.70	0.45	0.45											

As per ISO 10567 with excavator equipped with bucket.



**SERVICE & SUPPORT**  
THE CASE DEALER  
YOUR PROFESSIONAL PARTNER



### WORLDWIDE CASE CONSTRUCTION EQUIPMENT CONTACT INFORMATION

**EUROPE/AFRICA/MIDDLE EAST:**  
CENTRE D AFFAIRES EGB  
5, AVENUE GEORGES BATAILLE - BP 40401  
60671 PLESSIS BELLEVILLE - FRANCE

**NORTH AMERICA/MEXICO:**  
700 STATE STREET  
RACINE, WI 53404 U.S.A.

**LATIN AMERICA:**  
AV. GENERAL DAVID SARNOFF 2237  
32210 - 900 CONTAGEM - MG  
BELO HORIZONTE BRAZIL

**ASIA PACIFIC:**  
UNIT 1 - 1 FOUNDATION PLACE - PROSPECT  
NEW SOUTH WALES - 2148 AUSTRALIA

**CHINA:**  
No. 29, INDUSTRIAL PREMISES, No. 376.  
DE BAO ROAD, WAIGAOQIAO FTZ, PUDONG,  
SHANGHAI, 200131, P.R.C.

**NOTE:** Standard and optional fittings can vary according to the demands and specific regulations of each country. The illustrations may include optional rather than standard fittings - consult your Case dealer. Furthermore, CNH reserves the right to modify machine specifications without incurring any obligation relating to such changes.

**CNH UK Ltd.**  
Armstrong House  
The Finningley Estate  
Hayfield Lane  
Doncaster  
DN9 3XA  
Fax +44 (0)1302 802126

Conforms to directive 98/37/CE

[www.casece.com](http://www.casece.com)

